

COMPASS



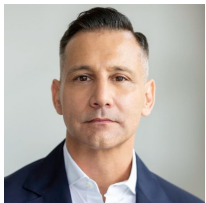
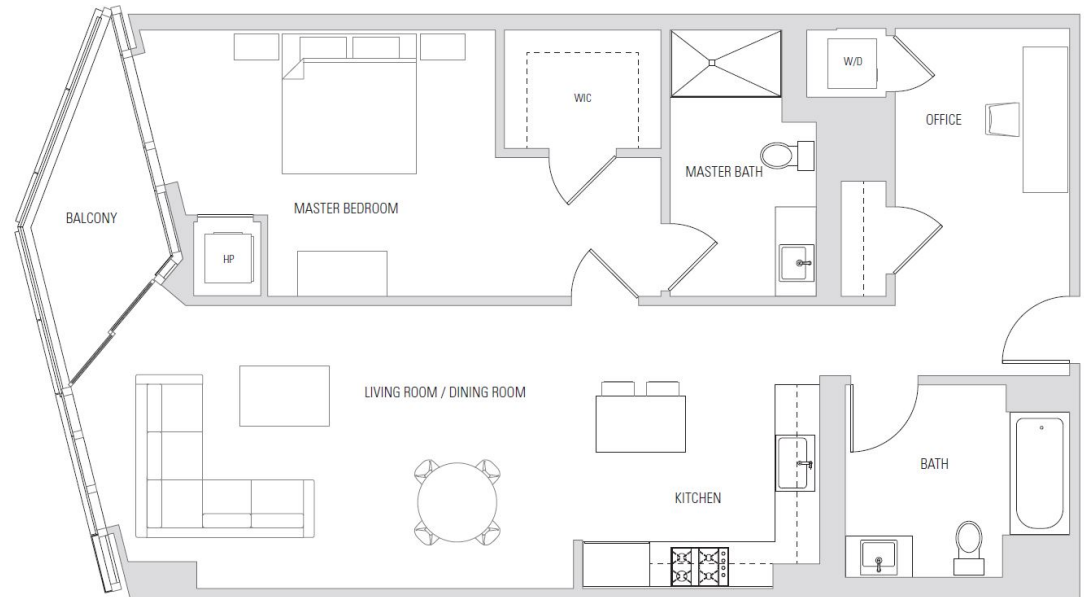
South Beach

LUMINA | 318 Main Street, Unit 4E



## Key Features

- Premium one bedroom home with a flexible den space that options as a guest space
- Open plan living area with 1,098 sq. ft. of living space and two full baths
- Luxurious owner's suite with a large walk-in-closet and indulgent bathroom
- Chef-grade kitchen with artful cabinetry, Caesarstone countertops, and Gaggenau appliances
- Gracious city outlooks and balcony to enjoy vibrant city living
- Wide plank oak flooring and ceramic tiled bathrooms
- Bosch washer & dryer and NEST technology
- One car valet parking
- Distinguished LUMINA building with over 45,000 sq. ft. of resort-style amenities, including a fitness center, indoor pool, lobby with concierge, business center, and movie theater
- Prime location two blocks from San Francisco's Embarcadero Waterfront



**Todd Montgomery**

DRE#: 01875716

REALTOR®

M: 415.203.6022

todd.montgomery@compass.com



**Marcus Lee**

DRE #: 01354869

REALTOR®

M: 415.999.2022

marcus.lee@compass.com

**Montgomery  
& Lee Team**

